



Keynote Speaker:
Dr. Meria J. Carstarphen

Superintendent, Atlanta Public Schools



APS



Piedmont Heights Civic Association
“Our Schools, Our Future”
November 12, 2017



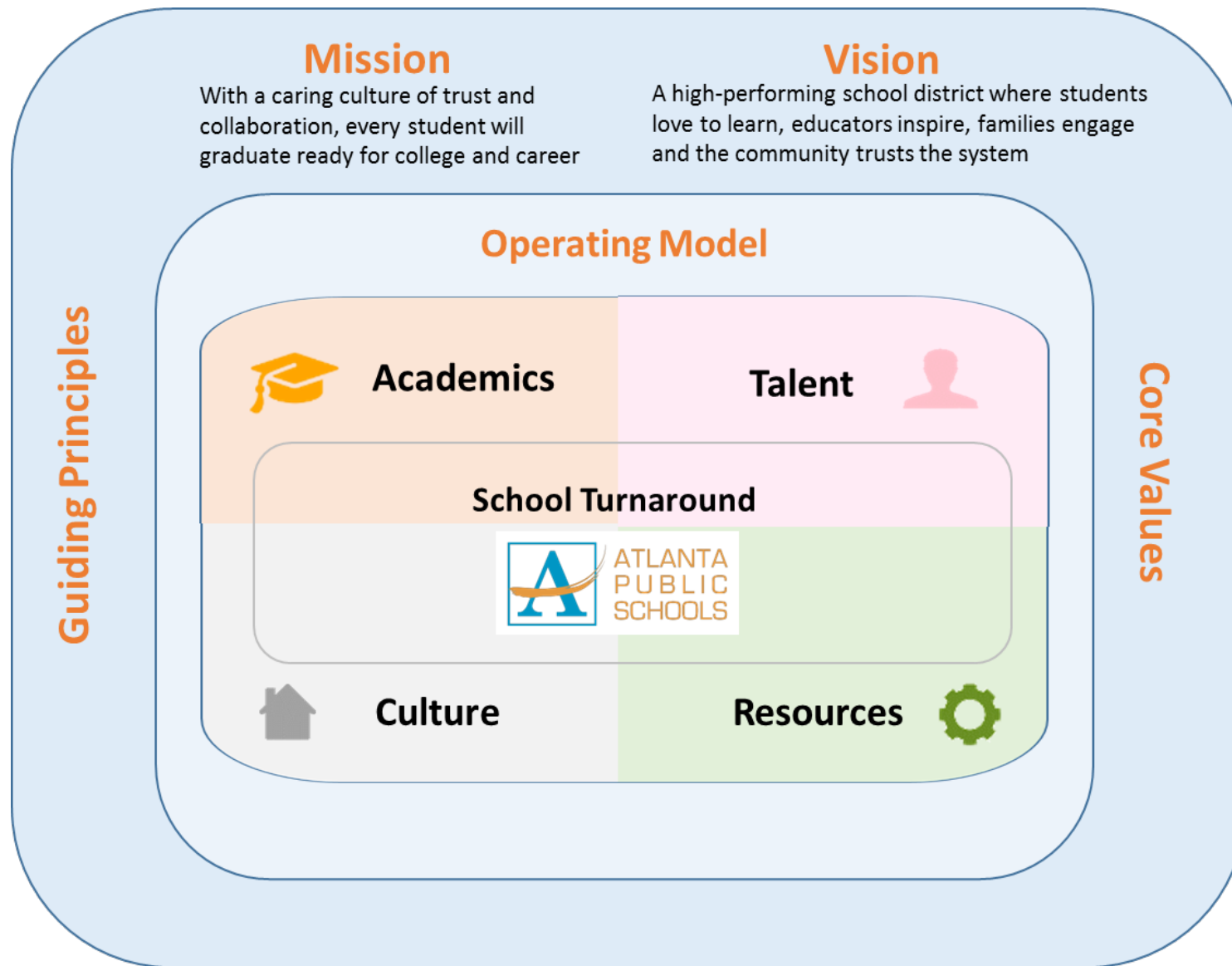
- State of the District/Cluster
- School Capacities
- Construction Updates
- Growth/Rezoning
- Centennial Academy
- Homeless Students
- Procurement Integrity
- City/District Relationship



APS is

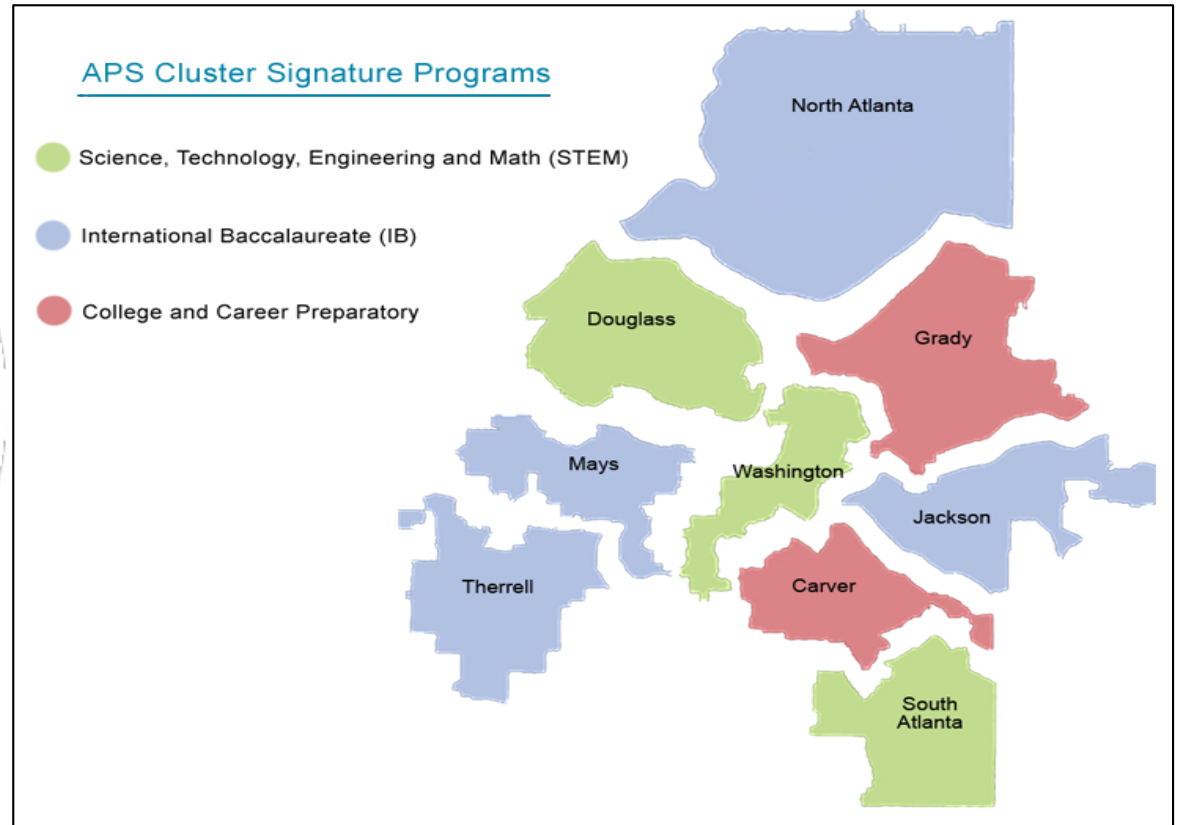
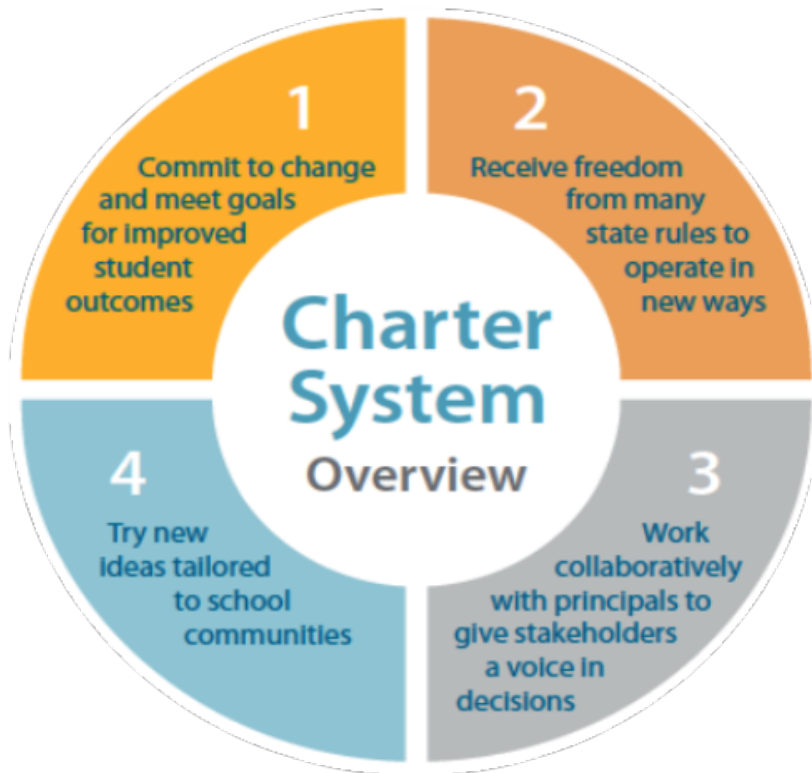
on a Journey of Transformation

APS Transformation Framework



Charter System Operating Model

APS became a Charter System on July 1, 2016. This contract, or “charter,” with the state allows more school-based decision making and flexibility but comes with increased accountability for student achievement.



Creation of GO Teams for heightened engagement, school-level decision-making



Multi-Year Budget Strategy

APS is implementing a multi-year budget right-sizing strategy that features the following:

1. Evaluating all funding requests for alignment to the district's mission and vision
2. Identifying the resources required to implement strategic priorities, initiatives and budget parameters
3. Reducing General Administration costs to redirect resources to support strategic priorities
4. Accelerating full-funding of pension benefits

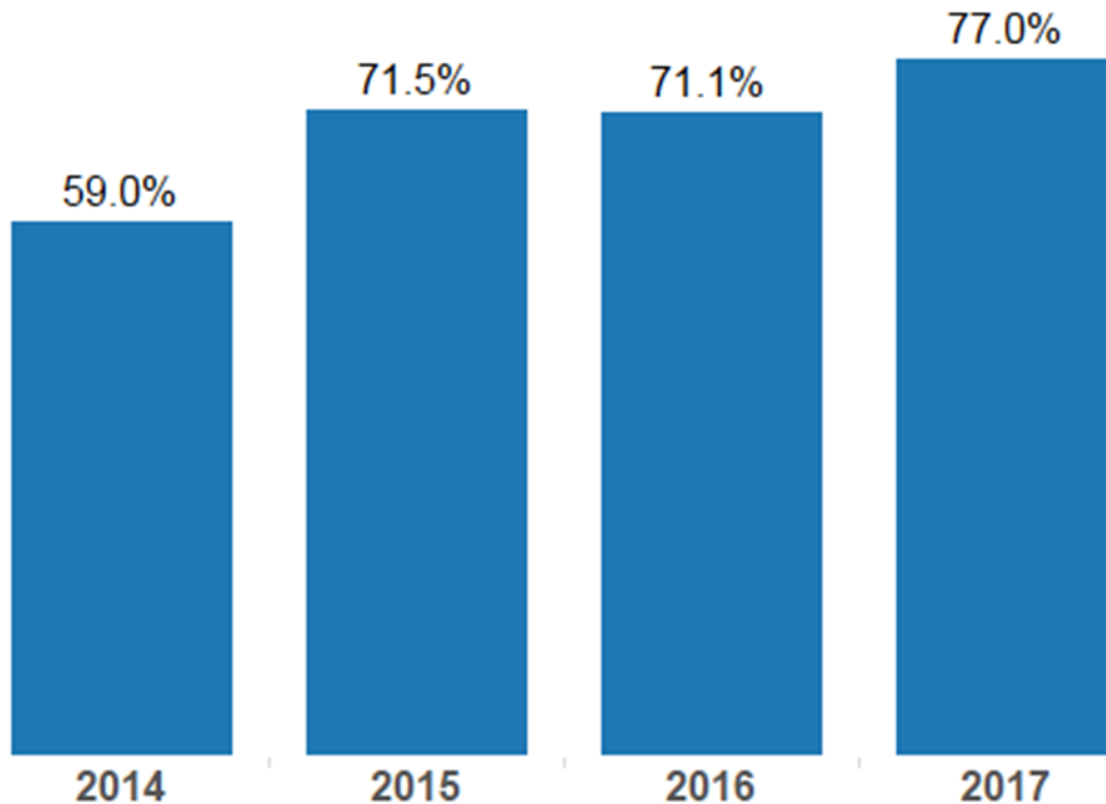




Atlanta Public Schools has created a strong game plan that we are fully executing in the areas of academics, talent, operations, and culture. Our transformational strategy is gaining ground with improvements in graduation rates and performance data, yet significant achievement gaps still exist.



Academic Highlights - District



District Graduation Rates

- APS 2017 graduation rate is 77%, the largest rate in recent district history, up 18 percentage points over 3 years
- 57 schools achieved gains across all subject areas on Georgia Milestones
- 56 schools improved CCRPI scores from 2016 to 2017 – 23 more than in 2016
- Decrease from 23 schools on GOSA's Chronically Failing Schools List to 16 schools on its Turnaround Eligible Schools List

Academic Highlights – Grady Cluster

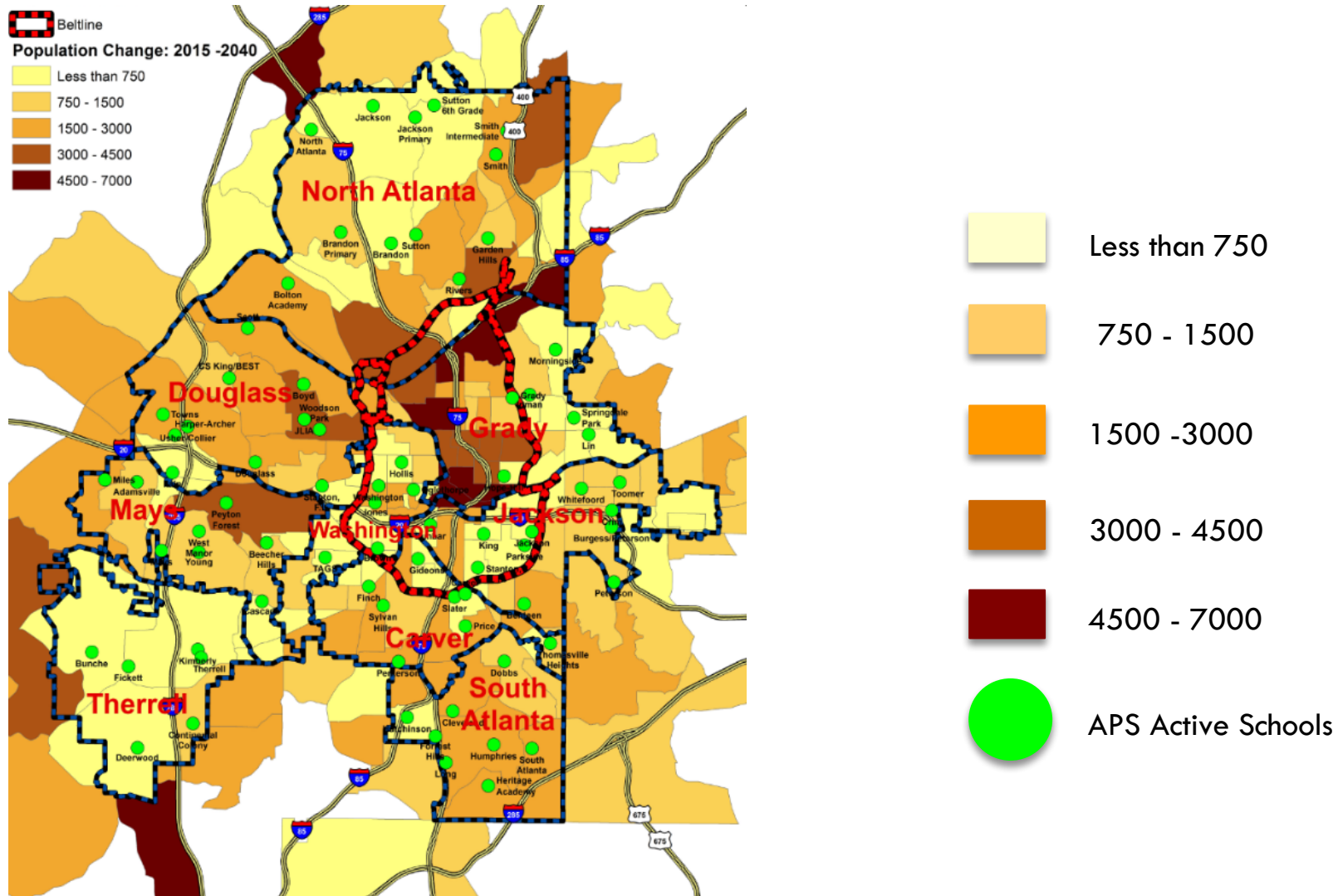
- Grady's Class of 2017 posted an 88.4% graduation rate
- 4 Grady schools achieved gains across all subject areas on Georgia Milestones
- 4 Grady schools posted CCRPI scores higher than 90, while Grady HS gained 11.2 points from 2016 to 2017
- No Grady schools appear on GOSA's Turnaround Eligible Schools List

College and Career Readiness Performance Index (CCRPI)

School	2015	2016	2017	Three-Year Average
Hope Hill ES	66.4	60.8	60.5	62.6
Mary Lin ES	93.2	98.9	97.8	96.6
Morningside ES	98.2	96.5	94.7	96.5
Springdale Park	94.5	95.6	95.8	95.3
Inman MS	90.7	91.6	89.9	90.7
Grady HS	70.5	72.4	83.6	75.5

Rezoning: Population Change in Atlanta

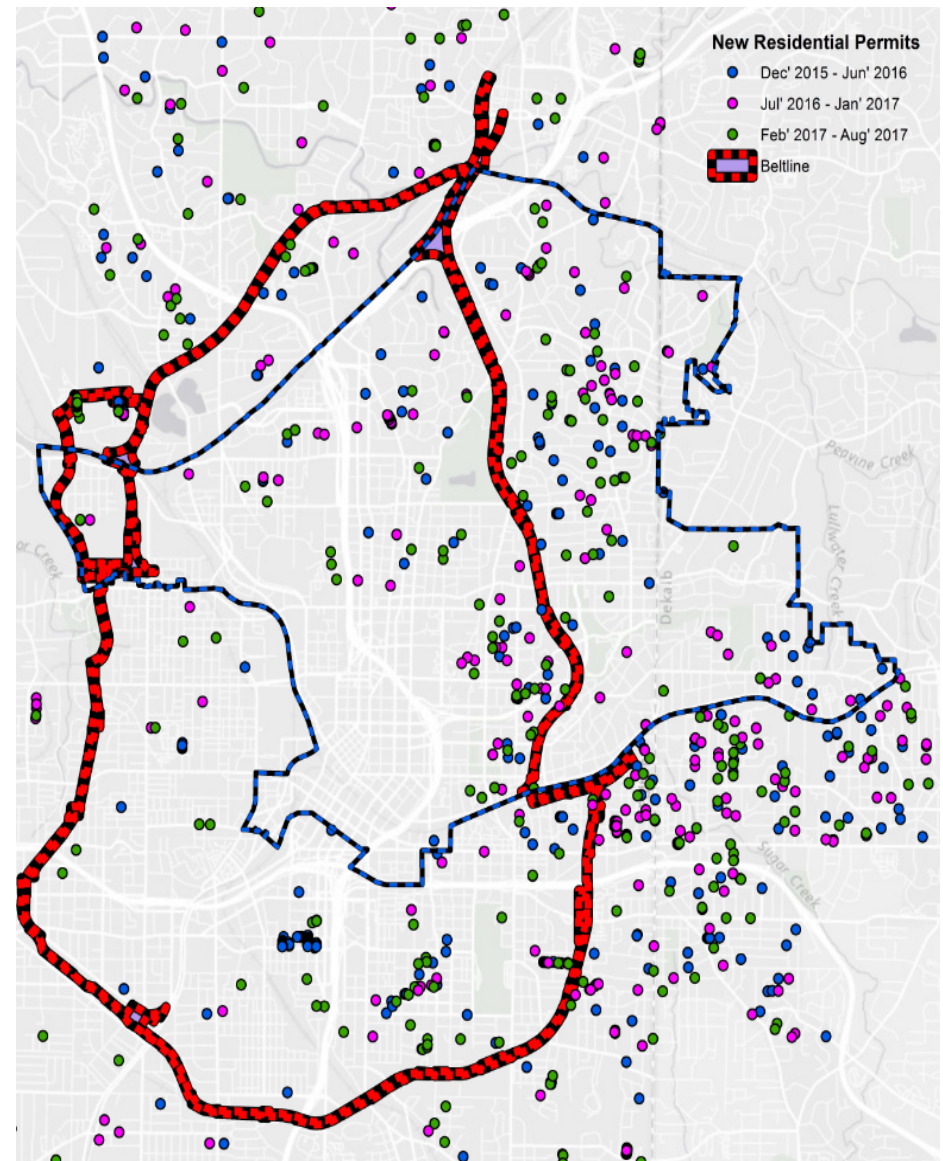
The Atlanta Regional Commission has projected that Metro Atlanta will grow by 2.5 million people by 2040. Atlanta – and the Grady Cluster – may see much of that growth.



Grady Residential Development

Grady has already seen growth. Most of new residential permits in Atlanta over the past two years have been issued for the Grady and Jackson clusters.

- Residential Permits:
 - December 2015 – June 2016
 - July 2016 – January 2017
 - February 2017 – August 2017



Grady Cluster

Enrollment and Projections

School	Capacity	FTE-1		Projections				
	@25/1	2016-17	2017-18	2018-19	2019-20	2020-21	2021-22	2022-23
Mary Lin Elementary	875	633	641	670	686	680	688	689
Morningside Elementary	900	887	932	964	988	1,015	1,021	1,025
Springdale Park Elementary	825	677	704	724	747	765	786	792
Hope-Hill Elementary	700	433	398	408	408	405	413	414
Inman Middle	875	1,091	1,075	1,060	1,056	1,099	1,120	1,144
Grady High	1,275	1,372	1,332	1,346	1,350	1,351	1,348	1,357

SPLOST in Grady Cluster



Meria Carstarphen
@CarstarphenMJ

Follow

Woo hoo! APS Tranformation LITERALLY underway! Thank you ATL voters for the renewal of **#ESPLOST** in May 2016!
#pardonourprogress



APS OPS @OpsAps
APS Operations is making way for a new Walden Athletic Complex!
@CarstarphenMJ

10:38 AM - 8 Nov 2017

Atlanta Voters approved a new 5-year ESPLOST for APS in May 2016. Thank you!

Board of Education approved \$113 million of new construction and renovations for schools and athlete facilities in the Grady Cluster.

Design and construction crews approved for new middle school at Howard.

Construction has already begun on the Walden Athletic Complex!

Grady High School



Project Scope Outline

Renovations and improvements may include:

- Classroom addition – approx. \$22M
- Needs identified in Facility Condition Assessment – approx. \$11M
 - Updated HVAC, electrical and plumbing systems
 - Improvements to roofing
 - Improvements to classroom, support & administrative spaces
 - New interior lighting and signage
 - Updated data, voice, video, life safety and security systems
 - Exterior improvements:
 - Monument signage
 - Exterior lighting
 - Sidewalk and landscape
 - storm water system

- **Construction Budget** – \$28,100,000
- **Project Budget** – \$33,000,000 (includes design, construction, testing, hazmat, FFE & relocation)
- **Tentative Project Schedule**
 - Design Start – May 2018
 - Design Complete – Dec. 2019
 - Construction Start – Jan. 2020
 - Construction Complete – July 2021

Howard Middle School



Project Scope Outline

Additions and modifications to create a 1,375-student school may include:

- Classroom and support space additions
- Renovated classroom, support & admin spaces
- Updated exterior finish
- New Auditorium, Media Center, Cafeteria & Kitchen
- New windows, doors and hardware
- New interior finishes, lighting and signage
- New entry features, canopies, etc.
- New hardscape and landscape
- New monument signage and exterior lighting
- New fencing and gates
- New HVAC, electrical and plumbing systems
- New low voltage, data, voice, video systems
- New life safety and security systems
- Improved security and access to Main Office
- Improved identity of main, bus & carpool entry
- Improved bus, carpool, pedestrian ADA accessibility
- Improved visitor and staff parking
- Improved security through environmental design

- **Construction Budget** – \$42,000,000
- **Project Budget** – \$52,000,000 (includes design, construction, testing, hazmat, FFE & relocation)
- **Tentative Project Schedule**
 - Design Start – Jan. 2017
 - Design Complete – June 2018
 - Construction Start – July 2018
 - Construction Complete – July 2020

Morningside Elementary School



Project Scope Outline

Renovations and improvements may include:

- Select improvements to classroom, support & administrative spaces
- Improvements to Auditorium & Performing Arts
- Improvements to Media Center
- Improvements to Cafeteria & Kitchen
- Improved security and access to Main Office
- Improved security through environmental design
- Improved monument signage and exterior lighting
- Improved and fencing and gates
- New interior finishes, lighting and signage
- Updated electrical and plumbing systems
- Updated low voltage, data, voice, video, life safety and security systems
- Improved hardscape and landscape

- **Construction Budget** – \$17,000,000
- **Project Budget** – \$20,000,000 (includes design, construction, testing, hazmat, FFE & relocation)
- **Tentative Project Schedule**
 - Design Start – Sept. 2019
 - Design Complete – Dec. 2020
 - Construction Start – Jan. 2021
 - Construction Complete – July 2022

Walden Athletic Complex



Project Scope Outline

Renovations and improvements may include:

- Abatement and demolition of the existing building
- Construction of a synthetic turf football and multi-sport field with GHSA competition game markings
- Drainage and storm water management systems
- Site utilities, sewer, water, gas, electric
- Sidewalk, ramps, steps, parking and drives, etc.
- Fencing, netting and gates
- Irrigation to natural turf
- Competition athletic lighting and security lighting
- Score boards and control systems
- Field markers, goals, bases, dugouts, backstops, benches and support equipment
- Concrete pads and bleachers
- Natural turf baseball / softball field convertible by season with GHSA competition game markings
- Construction of a Field House with locker rooms, restrooms, concessions, storage and offices
- Monument signage, exterior and interior signage and landscaping

- **Construction Budget** – \$6,800,000
- **Project Budget** – \$8,000,000 (includes design, construction, testing, hazmat, FFE & relocation)
- **Tentative Project Schedule**
 - Design Start – Jan. 2017
 - Design Complete – Sept. 2017
 - Construction Start – Oct. 2017
 - Construction Complete – Aug. 2018

Centennial Academy



College and Career Readiness Performance Index (CCRPI) – Centennial Academy

School	2015	2016	2017	3-Year Average
Centennial (K-5)	54.9	56.4	82.7	64.7
Centennial (6-8)	61	81.7	80.8	74.5

- Opened in 1996 as a traditional neighborhood school; conversion charter approved by Atlanta Board of Education in December 2013; opened as a conversion charter K-5 school in August 2014
- Charter allowed flexibility to expand to K-8 school; School is now a K-8 STEAM school with partnerships with Georgia Tech and YMCA, with no current plans to expand into the high school grades
- Centennial Place Academy and Inman Middle school zones set by Board in April 2015. Centennial Place Academy zone removed from Inman zone effective for 2017-18 school year

Other Topics

- **Procurement Integrity**

- APS strives to promote open, clear and competitive process for any contracts with the district.
- Commissioned Disparity Study to address concerns about awards to minority and women-owned businesses
- Improved process to make procurement more fair and competitive.

- **Homeless Students**

- APS educates about 1,600 students identified as homeless; 183 presently attend Grady schools
- Department of Homeless Education provides transportation, supplies, and assistance
- Launched Partnership with Purposity so stakeholders can help

- **City/District Relationship** – APS open to strong working relationship with mayor and city officials on the district's Agenda for Children.



APS is

Choice-Filled Lives